



CLASS I

The Models 750 and 760 hydraulic swing gate operators are designed specifically for underground installation in residential and light commercial applications. Because of their power and absolute invisibility, the 750 and 760 are ideal for large, ornamental gates.

Hydraulic swing gate operators are inherently safer than other types of operators because they have fewer "pinch points." In addition, FAAC 750 and 760 operators are equipped with a hydraulic bypass valve for extra entrapment protection and a manual release that allows you to operate your gate if there is a power failure. A battery back-up unit is also available.

Model 750

The 750 hydraulic system can hydraulically lock your gate in the opened and/or closed positions. Your gate system can also be set up to provide special options including "gate-safe" or "gate-secure" configurations:

- Gate-safe: during power outages, a magnetic lock

releases a closed gate to permit emergency access.

- Gate-secure: during power outages, an electric lock keeps a closed gate locked.

The 750 allows your gate to open to the inside or to the outside. The versatile FAAC control panel allows for six operating modes including garage-door-like operation and a new HOLD OPEN function.

Model 760

The Model 760 offers many of the benefits of the 750, along with the special feature of having both the power and pump units located underground. This integrated system results in simplified installation and maintenance, plus allows you to operate the manual release from inside or outside the gate. The 760 can be ordered with a "soft stop" feature which slows down the gate at the end of travel.

Parameter	Model 750	Model 760
Application	Residential, light commercial (ideal for ornamental gates)	
Cycles per hour	30	30
Maximum gate swing	110 degrees or 180 degrees	148 degrees with "soft stop"
90 degree opening time	Standard leaf: 12 seconds Longer leaf: 12 seconds Extra long leaf: 17 seconds	
Maximum weight per gate leaf	up to 1760 pounds	
Maximum length per gate leaf	Standard leaf: 8 feet Longer leaf: 10 feet Extra long leaf: 13 feet	
Operating temperature range	Approximately -33°F to 165°F (-36°C to 74°C)	
Hydraulic locking	Standard leaf: available in opened and/or closed positions Longer leaf: not available	Standard leaf: available in opened and/or closed positions Longer leaf: not available Extra long leaf: not available
Voltage	Available in 115 VAC or 230 VAC	
Physical dimensions		
Hydraulic power unit	(power unit is part of ram unit)	
Height	13 3/4 in.	
Width	8 3/16 in.	
Depth	5 1/8 in.	
Hydraulic ram unit (not including shaft)		
Length	16 1/8 in.	19 1/4 in.
Width	8 in.	10 1/4 in.
Depth	5 in.	6 1/4 in.

Note: Operator specifications are approximate. Environmental factors can change the performance of the operator. Your installer will advise you regarding which model of operator will work best for your site and application.

U.L. Class Descriptions & FAAC Operators			
Class	FAAC Models	Duty Cycle	Typical Use
Class 1	Residential vehicular gate operator	400, 402, 422, 750, 760, 620, 640, 412	Limited duty • Home use • Small apartment building up to 4 units per building, limited public access
Class 2	Commercial/General access vehicular gate operator	400, 620, 640	Continuous duty • Apartment buildings • Open public access
Class 3	Industrial/Limited access vehicular gate operator	400, 620, 640	Continuous Duty • No public access
Class 4	Restricted Access vehicular gate operator	620, 640	Continuous Duty • Prison related security

Model 760 Kits include:

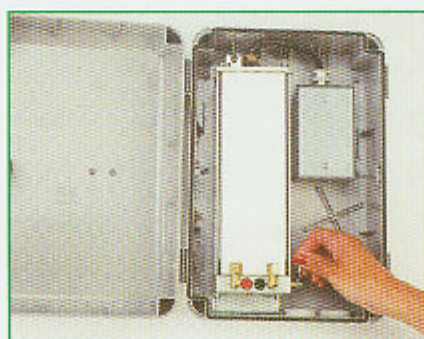
- One or two drive-pump units
- One or two load bearing boxes
- One or two keyed manual releases (CBAC versions only)
- One 450 MPS control panel
- One 14 x 16 in. weather resistant UL Listed fiberglass enclosure
- Two photobeam sets for opening and closing reversing devices
- One or two manual release keys
- One plug-in radio receiver
- Two radio transmitters
- 115 VAC receptacle for accessories (5 amp max.)
- ON/OFF switch controlling power to control panel, accessories and plug outlet
- Pre-wired for dual photobeams - open and closing reversing devices
- Pre-wired motors to terminal strip
- Pre-wired Open/Hold Open contacts
- Test button
- Two or four warning signs

Model 750 Kits include:

- One or two pump motor assemblies
- One or two drive units with metal enclosure and top
- One or two 33 ft lengths of flex hose & one or two connector kits
- One or two foundation plates
- One 450 MPS control panel
- One 14 x 16 in. weather resistant UL Listed fiberglass enclosure
- Two photobeam sets for opening and closing reversing devices
- One or two manual release keys
- One plug-in radio receiver
- Two radio transmitters
- 115 VAC receptacle for accessories (5 amp max.)
- ON/OFF switch controlling power to control panel, accessories and plug outlet
- Pre-wired for dual photobeams - open and closing reversing devices
- Pre-wired motors to terminal strip
- Pre-wired Open/Hold Open contacts
- Test button
- Two or four warning signs

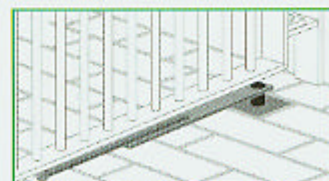


A convenient manual release is standard on the model 750 operator.

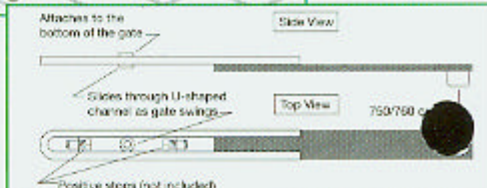


A Garage Door & Gate Store, Inc.

Manual release is standard on the model 750 operator.



Installation of Model 750/760 Extension Arm



The 750/760 extension arm can be easily modified to act as positive stops. Call FAAC for details.

For more info call 1-800

P.O. Box 787
Lakeside, CA 92040
(619) 561-9370 Fax (619) 561-9372

www.faacusa.com or



LIT-750/760REV-5/01